

# The choice of coating is crucial!

There are many factors to consider when choosing the ideal coating system for use with wood, including Accoya®; what kind of weathering does it need to withstand, what is the level of exposure, what are its specific properties, should the coating be translucent or opaque...?

 <p><b>CETOL® WP 567 BPD*</b> Translucent 1K Impregnating primer</p> <p><b>Product type:</b> Impregnation + Primer <b>Binder type:</b> Acrylic</p> <p><b>Application:</b>   Dipping   Flow coating   Brushing machine</p> <p><b>Product properties:</b> Impregnating and priming in one step, protecting against blue stain and rot fungi.</p> <p><b>Colours:</b> Base TC colourless (Except from Joinery Colour Classics)</p>	 <p><b>CETOL® WF 9810-03-15/25</b> Translucent 1K Mid- and top coat</p> <p><b>Product type:</b> Mid/Top Coat <b>Binder type:</b> Acrylic</p> <p><b>Application:</b>   Spray application Airmix/Airless</p> <p><b>Product properties:</b> Suitable for all wood (softwood, hardwood &amp; wood-alu), Excellent transparency and high "body", Good flow, Excellent levelling, Very good application properties, Excellent durability, no dirt pick up</p> <p><b>Colours:</b> Base TC, colourless (Joinery Colour Classics), Never Ending Impressions</p>	 <p><b>CETOL® WF 945/960/965</b> Translucent 1K Mid- and top coat</p> <p><b>Product type:</b> Mid/Top Coat <b>Binder type:</b> Acrylic</p> <p><b>Application:</b>   Spray application Airmix/Airless</p> <p><b>Product properties:</b> Good levelling, good weather resistance, no blushing, excellent durability</p> <p><b>Colours:</b> Base TC, colourless (Joinery Colour Classics), Never Ending Impressions</p>
--	--	--









**For coating cladding translucent we recommend:**  
**Primer\*:** CETOL® WP 567  
**Topcoat:** CETOL® WF 9810-46-25

**For coating cladding opaque we recommend:**  
**Primer\*:** CETOL® WP 567  
**Topcoat:** RUBBOL® WF 331X-03-25

Seal all end-grain with Kodrin WV 456.  
 \*or AXIL 2000 in countries where this is registered.



## Sealing of all the endgrain with Kodrin WV 456.

 <p><b>CETOL® WP 567 BPD*</b> Translucent 1K Impregnating primer</p> <p><b>Product type:</b> Primer <b>Binder type:</b> Acrylic</p> <p><b>Application:</b>   Dipping   Flow coating   Brushing machine</p> <p><b>Product properties:</b> Impregnating and priming in one step, protecting against blue stain and rot fungi.</p> <p><b>Colours:</b> Base TC colourless (Except from Joinery Colour Classics)</p>	 <p><b>RUBBOL® WP 198</b> Opaque 1K Primer</p> <p><b>Product type:</b> Primer <b>Binder type:</b> Acrylic</p> <p><b>Application:</b>   Spray application Airmix/Airless</p> <p><b>Product properties:</b> Best isolation against softwood extractives, easy to sand, reduces discolouration from knots and resinous areas</p> <p><b>Colours:</b> White</p>	 <p><b>RUBBOL® WP 151</b> Opaque 2K Primer</p> <p><b>Product type:</b> Primer <b>Binder type:</b> Acrylic</p> <p><b>Application:</b>   Spray application Airmix/Airless</p> <p><b>Product properties:</b> Best isolation against discolouration of soft- and hardwood, high filling, good pore wetting</p> <p><b>Colours:</b> White</p>	 <p><b>RUBBOL® WF 331X-03-25/35</b> Opaque 1K Mid and Top Coat</p> <p><b>Product type:</b> Mid/Top Coat <b>Binder type:</b> Acrylic</p> <p><b>Application:</b>   Spray application Airmix/Airless</p> <p><b>Product properties:</b> Good levelling, good weather resistance</p> <p><b>Colours:</b> Base B01 white and Base B00 neutral (colour shades made from 5051 colour concept, RAL and NCS)</p>
--	---	--	--

## Sealing of all the endgrain with Kodrin WV 456.

For deviation on the standard system please contact you local TechServ.

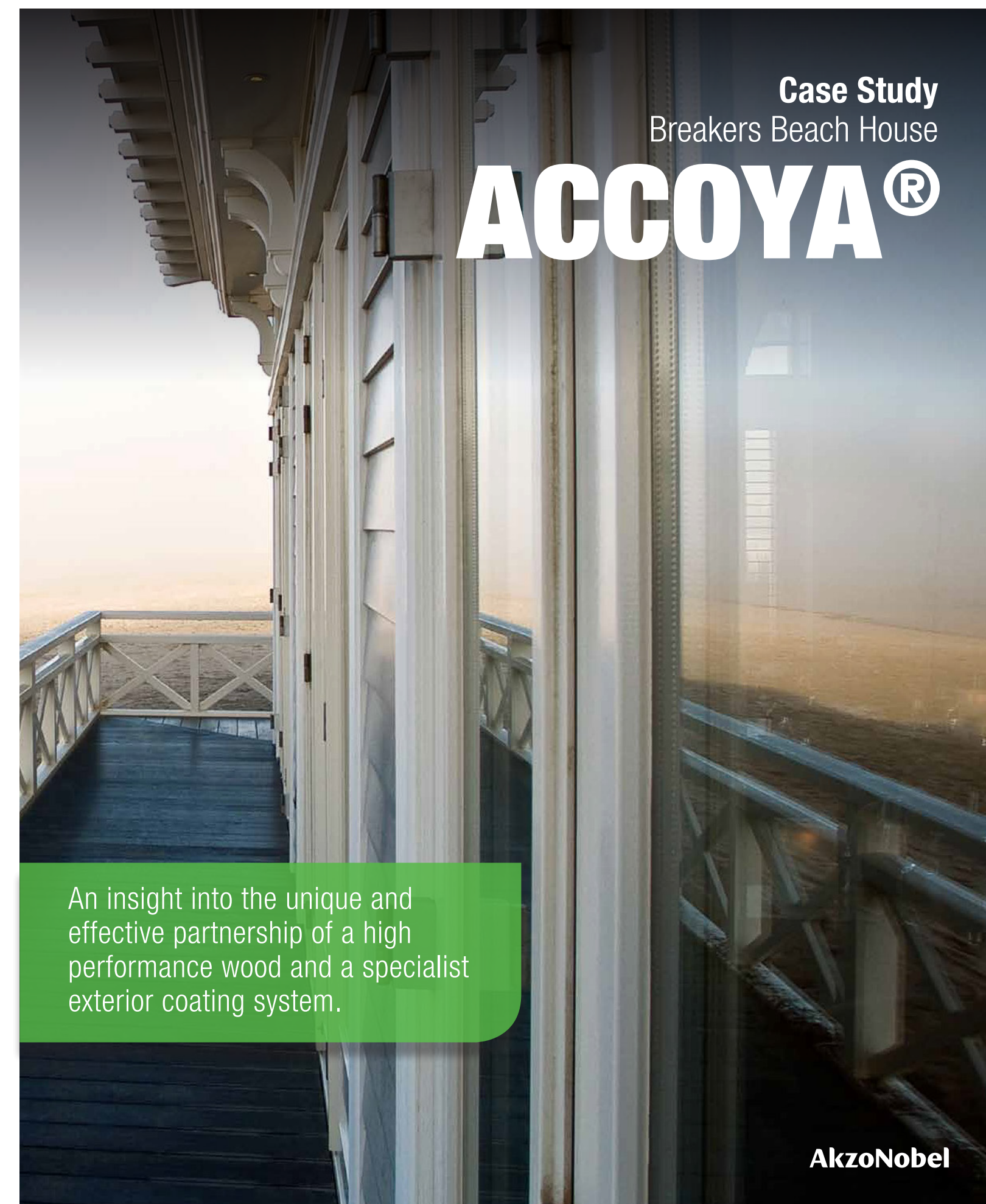


www.sikkens-wood-coatings.com

We've been pioneering a world of possibilities to bring surfaces to life for well over 200 years. As experts in making coatings, there's a good chance you're only ever a few meters away from one of our products. Our world class portfolio of brands – including Dulux, International, Sikkens and Interpon – is trusted by customers around the globe. We're active in more than 150 countries and have set our sights on becoming the global industry leader. It's what you'd expect from the most sustainable paints company, which has been inventing the future for more than two centuries.

For more information please visit [www.akzonobel.com](http://www.akzonobel.com).

© 2021 Akzo Nobel N.V. All rights reserved.



Case Study  
Breakers Beach House

# ACCOYA®

An insight into the unique and effective partnership of a high performance wood and a specialist exterior coating system.

AkzoNobel



## Sikkens Wood Coatings / Accoya® Breakers Beach House

In the summer of 2010 the renowned Dutch Huis ter Duin Grand Hotel extended its building complex by an impressive beach pavilion: the Breakers Beach House.

A daring undertaking, say many experts, as the pavilion is made from wood which has to brave wind and sun, sand and salt in equal measure in this exposed location.

### Project insight

From the outset, joinery company Van Leeuwen from Noordwijkerhout had only one wood in mind: Accoya®. With an accordingly sturdy coating by Sikkens Wood Coatings.

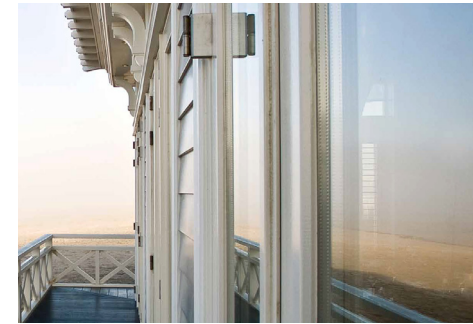


Image copyright © Accoya 2021

#### Test passed with flying colours

The management of the premium hotel Huis ter Duin gained full confidence in the supplier Van Leeuwen, in the wood and the coating. The parties have already had good experiences together: The same wood and coating were used for the frame of the round teahouse of the hotel. With resounding success. However, not only individual parts but all the wooden components of the exterior of the Breakers Beach House are made from durable Accoya®: from the wall, to the cladding and the gable coverings to the frame, struts and gutter frame.

#### Totally convincing results

The fact that this has been such an impressive success is also due to the special properties of the wood. Accoya® is easy to process, is FSC-certified and very dimensionally stable, i.e. it neither shrinks nor expands. And it isn't just the wood specialists at Van Leeuwen who are convinced: Accoya® with Sikkens Wood Coatings are ideal for buildings located on the beach – especially if they have a row of doors facing the sea. The hotel management gives a similar verdict: there is great enthusiasm for the super-smoothly processed surface and the minimal maintenance commitment.

#### Great opportunities for trade

Those at Sikkens Wood Coatings are also convinced by Accoya®. Particularly in the areas of windows, doors, cladding and wooden floors, it opens up brand new opportunities – because, unlike many other wood types, it will hardly shrink and swell.

### Project results

#### Proven long-term quality

The excellent quality of the wood and coating has now been established during a review.



No sign of rot or decay



Excellent coating performance



No blisters or cracking



Great performance in extreme weather conditions

accoya®

The wood for extreme conditions

So it turned out that Accoya® the high performance wood and the products from the AkzoNobel brand Sikkens Wood Coatings were a good choice for the Breakers Beach House near the beach.

#### Working with ACCOYA®?

Why choose Sikkens as your coating.

#### Strong Brand

Tradition and competence, innovation and quality, service and partnership – these are the values that have made us the leading brand in wood coatings for exterior applications. The basis of our success is our passion for wood and striving toward perfect coating solutions.

#### High Standards

At Sikkens Wood Coatings we put great emphasis on good cooperation – internally and externally. This is the only way to meet our own high standards. Our product developments and highly modern coating systems, is continuously setting new standards in wood protection. The goal: reliable wood protection solutions for any substrate and any application.

#### Great performance

The Sikkens Wood Coatings brand has existed since 1792. Experience and expertise have grown enormously in that time. We are very proud of our tradition, of the quality of the products and of the satisfaction of our customers who have made us the market leader. But our past success does not blur our vision for the future. Quite the opposite - we have a clear view of the challenges that lie ahead and have developed ideas and a vision in order to master them.

#### Did you know?

522 meters of framing wood, 438 meters of door wood and 1,050 metres of gable covering was used for the Breakers Beach House in Noordwijk. The beach pavilion has 58 doors of which 46 can be opened.

#### Good outlook

With our passion for wood we develop optimum coating systems for wood components in outdoor use such as façades or wood windows and doors. We are proud to bring you coating solutions for Accoya® -the wood for extreme conditions.

